



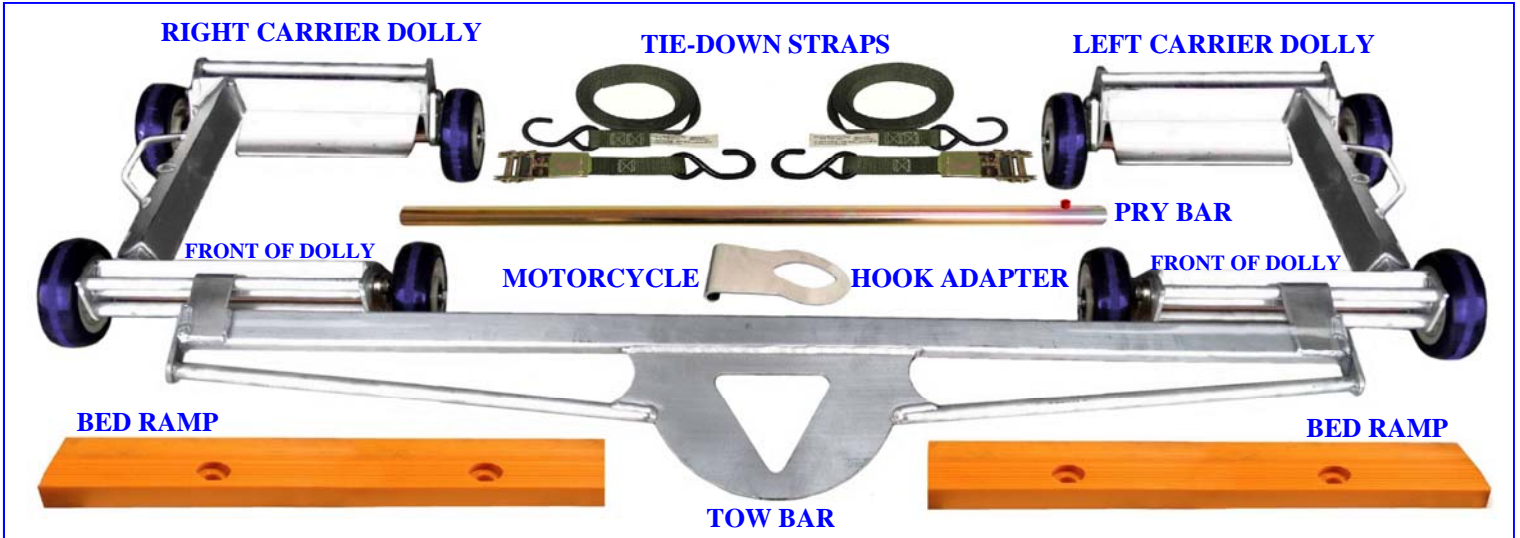
Collins Manufacturing Corp.

HI-SPEED® CARRIER DOLLY INSTRUCTION

Questions? Phone: (800) 332-9220 or (541) 774-9220
Email: sales@collinsdollies.com



COLLINS HI-SPEED® CARRIER DOLLY SYSTEM (CD-S)



USING THE CARRIER DOLLY SYSTEM

1.) PLACE FRONT OF CARRIER DOLLY TOWARD CARRIER WITH DOLLY IN LOWERED POSITION, REMOVE BALL DETENT LOCK PIN.



BALL DETENT LOCK PIN

2.) SLIDE DOLLY APART UNTIL LEGS CAN BE PLACED FORE AND AFT OF VEHICLE'S TIRE.



3.) PLACE DOLLY UNDERNEATH VEHICLE.



4.) TIGHTEN DOLLY LEGS AGAINST VEHICLE'S TIRE THEN REPLACE LOCK PIN THROUGH HOLES IN TELESCOPIC ARM.



COLLINS HI-SPEED[®] CARRIER DOLLY INSTRUCTION (CONTINUED)

5.) INSERT PRY BAR IN EACH AXLE POCKET AND ROTATE PRY BAR AROUND WHEEL UNTIL AXLE SNAPS IN PLACE BENEATH DOLLY. REPEAT FOR EACH AXLE UNTIL VEHICLE TIRES ARE RESTING ON CARRIER DOLLIES.

Insert this end to Raise dolly.

Insert this end to Lower dolly, with Red Button on top.

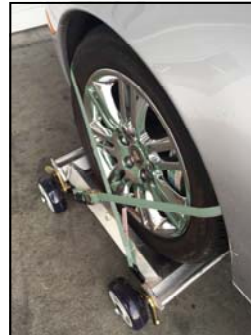


6.) HOOK TIE-DOWN STRAP TO LEADING OR TRAILING DOLLY AXLE.

HOOKING TIE-DOWN STRAPS TO AXLES PREVENTS UNCOMMANDED RELEASE OF DOLLIES WHILE IN THE LOADED POSITION.



7.) CROSS TIE THE TIE-DOWN STRAP AROUND THE VEHICLE TIRE AND ATTACH HOOK TO THE OPPOSITE DOLLY AXLE, THEREBY SECURING THE AXLES IN THE LOADED POSITION.



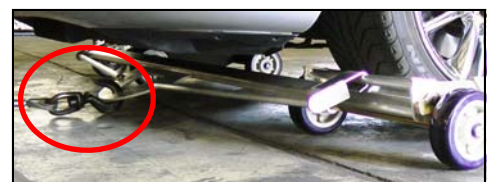
8.) TIGHTEN RATCHET BUCKLE AND REPEAT PROCESS FOR EACH DOLLY.



9.) HOOK TOW BAR TO FRONT OF BOTH CARRIER DOLLIES. BE SURE TOW BAR IS CENTERED TO THE DOLLIES, AS WELL.



10.) ATTACH WINCH CABLE TOW HOOK TO FRONT OF TOW BAR AND TAKE UP THE SLACK IN WINCH CABLE. THIS WILL PREVENT THE VEHICLE FROM ROLLING BACK.



COLLINS HI-SPEED® CARRIER DOLLY INSTRUCTION (CONTINUED)

11.) WITH VEHICLE SECURED TO CARRIER'S WINCH CABLE, PUT FOOT ON BRAKE AND PLACE VEHICLE TRANSMISSION IN **NEUTRAL**. THEN RELEASE PARKING BRAKE. IF THERE IS NO ACCESS TO VEHICLE, A SECOND SET OF MINI DOLLIES WILL BE NECESSARY TO CARRY THE TRAILING AXLE OF THE VEHICLE.



12.) FINALLY, PLACE BED RAMPS IN LINE WITH CARRIER DOLLIES AGAINST THE REAR LIP OF CARRIER BED TO HELP FACILITATE TRANSITION OF THE DOLLIES ROLLING FROM THE GROUND ONTO THE BED.



13.) VEHICLE IS NOW READY FOR WINCHING UP CARRIER BED. ONCE LOADED, SECURE VEHICLE TO BED AS USUAL, LEAVING THE VEHICLE ON THE DOLLIES.



LOWERING THE VEHICLE IS THE REVERSE PROCESS OF RAISING IT. ONCE VEHICLE IS UNLOADED FROM CARRIER:

- 1.) APPLY PARKING BRAKE
- 2.) PLACE IN PARK
- 3.) REMOVE TIE-DOWN STRAPS
- 4.) LOWER DOLLIES BY INSERTING END OF PRY BAR INTO POCKET, WITH **RED BUTTON ON TOP** OF PRY BAR, AS SHOWN TO THE RIGHT. GENTLY PUSH PRY BAR OVER TO LOWER DOLLY.



USING THE CD-S AS A MOTORCYCLE DOLLY

1.) WITH MOTORCYCLE PROPE UP BY KICK STAND, FOLLOW SAME FOUR STEPS FOUND ON PAGE ONE IN SETTING UP DOLLY UNDER-NEATH FRONT TIRE OF MOTORCYCLE.



2.) THEN PLACE PRY BAR ON EACH AXLE TAB AND ROTATE PRY BAR AROUND WHEEL UNTIL EACH AXLE LOCKS IN PLACE BENEATH DOLLY.

3.) INSERT TOW BAR INTO FRONT OF DOLLY, BETWEEN UPPER AND LOWER CROSS BARS. TOW BAR HOOKS SHOULD FACE AWAY FROM MOTORCYCLE. INSERT TOW BAR ALL THE WAY IN UNTIL TOW BAR'S REINFORCING BAR IS SEATED INTO NOTCH ON FRONT OF CARRIER DOLLY.



FAR RIGHT IS TOW BAR'S HOOKS FACING FORWARD. CIRCLED RIGHT IS TOW BAR'S REINFORCING BAR SEATED INTO NOTCH ON THE FRONT OF THE CARRIER DOLLY.



COLLINS HI-SPEED[®] CARRIER DOLLY INSTRUCTION (CONTINUED)

4.) HOOK RATCHETING TIE-DOWN STRAP FROM TOW BAR'S RIGHT HOOK TO MOTORCYCLE'S RIGHT HANDLE BAR AND REMOVE SLACK. THEN REPEAT FOR LEFT SIDE, REMOVING ALL SLACK.



5.) TIGHTEN RATCHET STRAP ON RIGHT SIDE UNTIL BIKE IS VERTICAL. THEN ADJUST TENSION ON LEFT SIDE. CONTINUE UNTIL FRONT FORKS ARE COMPRESSED AND BIKE IS AGAIN VERTICAL.

6.) PLACE BED RAMP IN FRON OF CARRIER DOLLY.



7.) ATTACH MOTORCYCLE HOOK ADAPTOR THROUGH CENTER OF TOW BAR TO CARRIER DOLLY'S CROSS BAR.



8.) ATTACH CARRIER'S WINCH CABLE HOOK TO MOTORCYCLE HOOK ADAPTOR. NOTICE THAT ALL CABLE FORCE IS NOW ON THE DOLLY.



9.) MOTORCYCLE IS NOW READY FOR WINCHING UP CARRIER BED. ONCE LOADED, SECURE MOTORCYCLE TO BED AS USUAL, LEAVING MOTORCYCLE ON THE DOLLY.



OPTIONAL TOW CRADLE, USING CARRIER DOLLY SYSTEM

NOTE: FOR TOW CRADLE USE, ROTOR NEEDS TO BE ELEVATED.

- 1.) RETRACT DOLLY TO SHORTEST LENGTH AND REPLACE PIN.
- 2.) PLACE TOW CRADLE ON TOP OF DOLLY AS SHOWN TO THE LEFT.
- 3.) POSITION DOLLY AND TOW CRADLE BENEATH VEHICLE ROTOR, WITH DOLLY IN UPRIGHT, LOADED POSITION.
- 4.) LOWER VEHICLE'S ROTOR ONTO TOW CRADLE AND DOLLY.
- 5.) SECURE WITH TIE-DOWN STRAPS, CROSS TYING TO DOLLY AXLES.



CARRIER DOLLY SPECIFICATIONS

DOLLY WEIGHT (EA.): 25 LBS.
TOW BAR WEIGHT: 9 LBS.

DIMENSIONS: 22" x 21" x 7"
DIMENSIONS: 64" x 12" x 2"

LOAD CAPACITY (EACH WHEEL): 600 LBS.
LOAD CAPACITY (PAIR OF DOLLIES): 4,800 LBS.